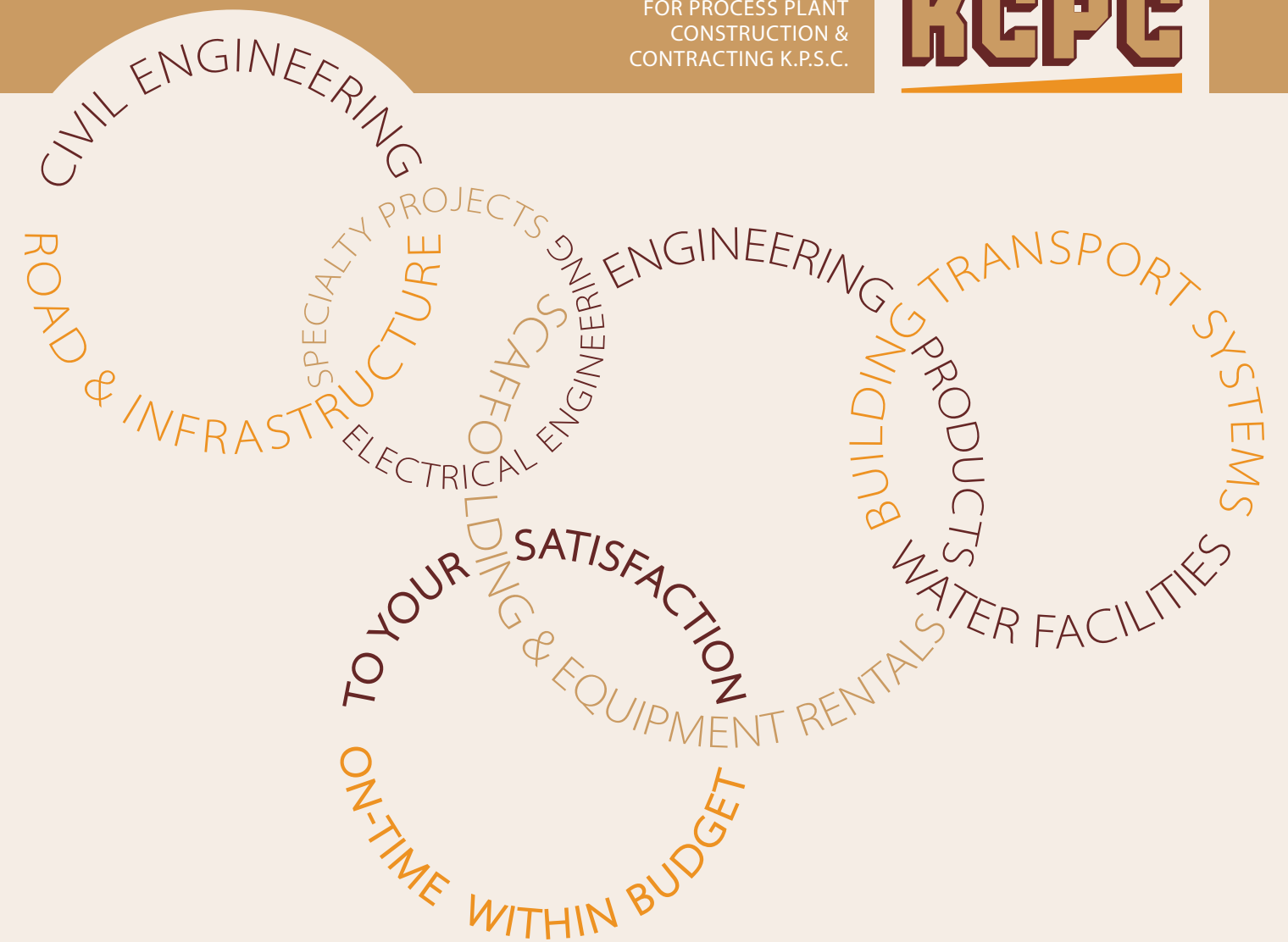




P.O.Box 3404 Safat 13035 Kuwait  
T. +965 2246 6650 F. +965 2245 1411  
E. [kcpc@kcpc.com.kw](mailto:kcpc@kcpc.com.kw)  
[www.kcpc.com.kw](http://www.kcpc.com.kw)

KUWAIT COMPANY  
FOR PROCESS PLANT  
CONSTRUCTION &  
CONTRACTING K.P.S.C.



# CONTENT

WELCOME TO KCPC	1
THE COMPANY	2
HISTORY & MILESTONES	4
VISION & MISSION	6
SCOPE OF ACTIVITIES	9
CIVIL CONSTRUCTION	10
INFRASTRUCTURE	12
ELECTRICAL ENGINEERING	13
INTERIOR FIT-OUTS	14
ENGINEERING PRODUCTS	15
EQUIPMENT RENTALS & SCAFFOLDING	16
BUILDING TRANSPORT SYSTEMS	17
WATER FEATURES / SWIMMING POOLS	18
QUALITY / HEALTH / SAFETY & ENVIRONMENT	20
FEATURED PROJECTS	23
CORPORATE SOCIAL RESPONSIBILITY	41
AWARDS & RECOGNITION	42
OUR PRESENCE	45

# WELCOME TO KCPC

## BOARD OF DIRECTORS

“ Since its formation more than 30 years ago, KCPC has been successful in creating an excellent record of accomplishment, ensuring stakeholders confidence. With our strong leadership and strategic vision, KCPC has successfully met its customer’s requirements and exceeded their expectations. Using the latest information and management technology, we provide total project services from initial conceptualization stage through planning, design, procurement, construction, and maintenance.

We are proud of our status as a Grade One construction company. Our success comes from building a stellar record of accomplishment, our commitment to our clients, and a culture of integrity, leadership and loyalty. As a commitment to delivering quality products at a competitive price to our customers, reducing waste, and improving efficiency and consistency from our operations; we embarked on ISO certifications and have successfully implemented ISO 9001:2008 (Quality Management Systems), ISO 14001:2004 (Environmental Best Practice) and OHSAS 18001:2004 (Occupational Health and Safety Management Systems).

Our success is fueled by our commitment to creating a balanced workplace that attracts and retains the most innovative in every field. KCPC therefore strives to be recognized as an employer of choice and has established programs designed to retain and attract highly skilled and motivated professional managers and a creative workforce.

*To date, it has been a fascinating journey and we look forward to taking KCPC into next decade of success.*

”

## THE COMPANY

The Kuwait Company for Process Plant Construction and Contracting K.P.S.C. (KCPC) was established in 1979. A pioneer in its field, KCPC is professionally managed, achieving international standards of ISO 9001:2008, ISO 14001:2004 and OHSAS 18001:2004 certifications. The Company is involved in executing turnkey projects for large, complex building, civil engineering and infrastructure projects for government and the private sectors; both locally and internationally.

KCPC is a classified "GRADE ONE" (Highest Level) construction company in accordance with the qualification system of the Central Tenders Committee of the State of Kuwait, as the official agency for qualification of local and international contractors for Kuwait Government projects.

In April of 2004, KCPC became the first construction company to be listed on the Kuwait Stock Exchange.



HISTORY & MILESTONES

\*KUWAIT COMPANY FOR PROCESSING PLANT CONSTRUCTION & CONTRACTING K.P.S.C. (KCPC) WAS ESTABLISHED

1979

\*COMPLETED THE COMPANY'S FIRST PROJECT: AL SHARQ COMMERCIAL PROJECT

1982

\* COMPLETED THE FIRST GOVERNMENT PROJECT: SEA WATER PRESSURE STATION (AL-SHUAIBA)

1989

\* KCPC BECAME THE EXCLUSIVE AGENT FOR SCHINDLER ELEVATORS AND ESCALATORS IN KUWAIT

1992

\* A HALLMARK YEAR WHEN KCPC COMPLETED A PRESTIGIOUS PROJECT OF NATIONAL PRIDE, THE AMIRI DIWAN

1998

\*COMPLETED ITS FIRST INTERNATIONAL PROJECT: INTERIOR FIT-OUTS FOR THE CONFERENCE PALACE HOTEL FOR THE GOVERNMENT OF ABU DHABI

2002

\* BECAME THE FIRST CONSTRUCTION COMPANY TO BE LISTED ON THE KUWAIT STOCK EXCHANGE

2004

\* KCPC WAS CERTIFIED AS ISO 9001:2008 COMPANY

2008

\*KCPC WAS THE FIRST KUWAITI CONSTRUCTION COMPANY TO IMPLEMENT ENTERPRISE RESOURCE PLANNING, SAP.

2010

\* COMPLETED THE CONSTRUCTION OF THE LUXURIOUS JUMEIRAH BEACH HOTEL AND SPA; A LANDMARK FOR KUWAIT'S TOURISM INDUSTRY

2011

\* KCPC WAS SELECTED AS ONE OF THE "TOP 10 IN THE GCC" BY CONSTRUCTION WEEK ONLINE (A LEADING WEB PORTAL FOR THE MIDDLE EAST CONSTRUCTION INDUSTRY)

2013

\* KCPC BECAME AN ISO 14001:2004 AND OHSAS 18001:2007 CERTIFIED COMPANY

2015

\*KCPC COMPLETED THE CONSTRUCTION OF UTILITIES TUNNEL AT NEW KUWAIT UNIVERSITY CAMPUS

2016

KUWAIT COMPANY FOR PROCESS PLANT CONSTRUCTION & CONTRACTING K.P.S.C.





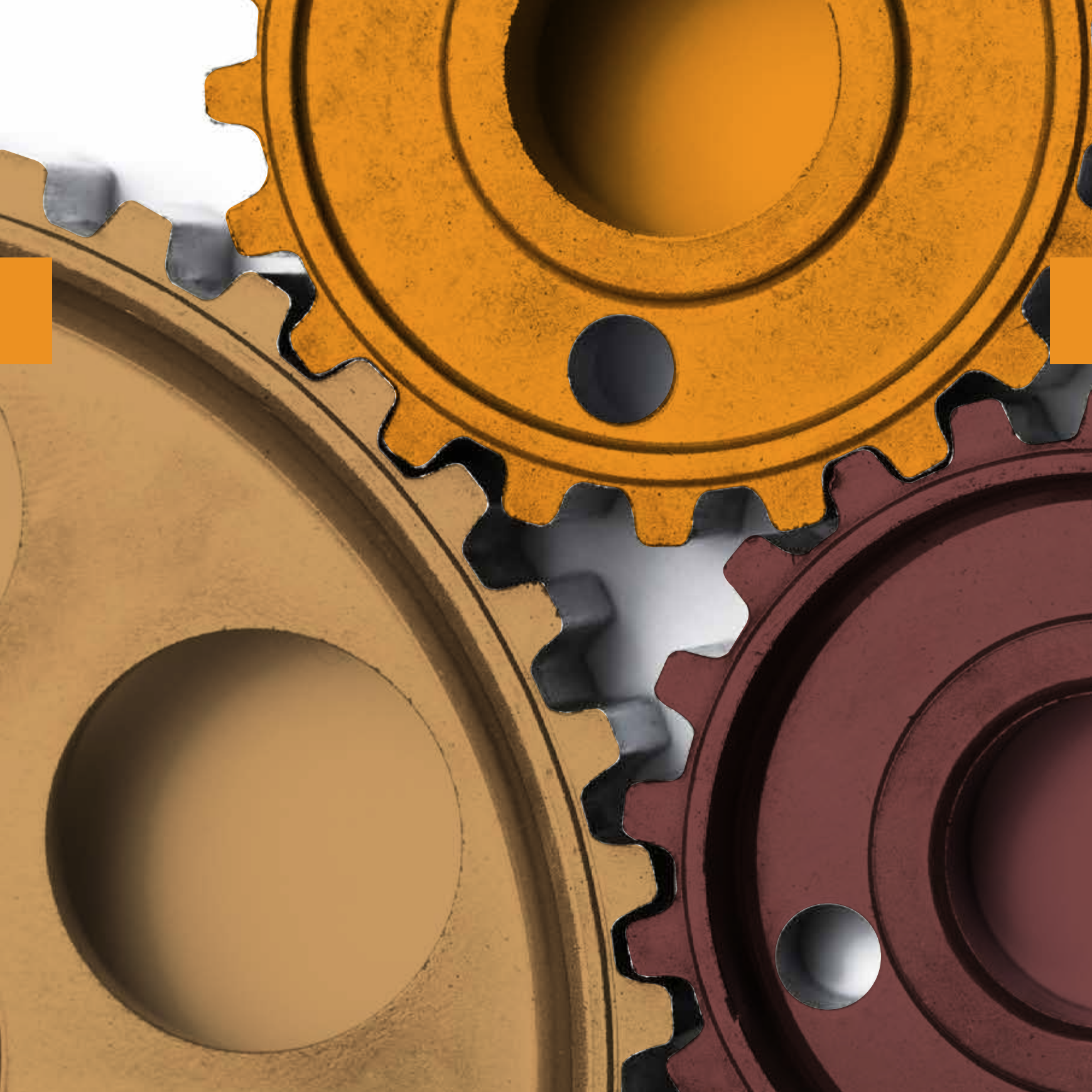
# VISION

We aspire to be the stellar **LEADER** in the construction sector across the MENA Region; and to be one of the most **RESPECTED** general contractors in our industry. We are committed to enhancing shareholders **VALUE** by continuously delivering income **GROWTH** and making KCPC a **SUSTAINABLE** company for generations to come.

# MISSION

- Exceed our customer’s expectations by delivering an unanticipated high level of quality
- Deliver projects on time and within cost
- Develop awareness to inspire positive and responsible attitudes to health and safety
- Create a culture of creativity that motivates and nurtures our team members
- Maintain and engage relations with our stakeholders
- Encourage innovative ideas and different perspectives to surpass the latest developments and trends in our industry
- To seek out the latest industry-recognized standards and certifications so that KCPC is recognized as an international organization

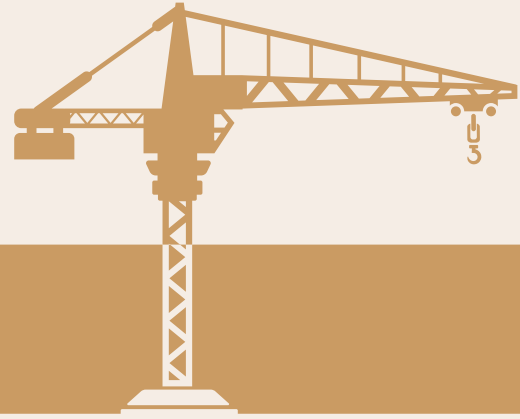




## SCOPE OF ACTIVITES

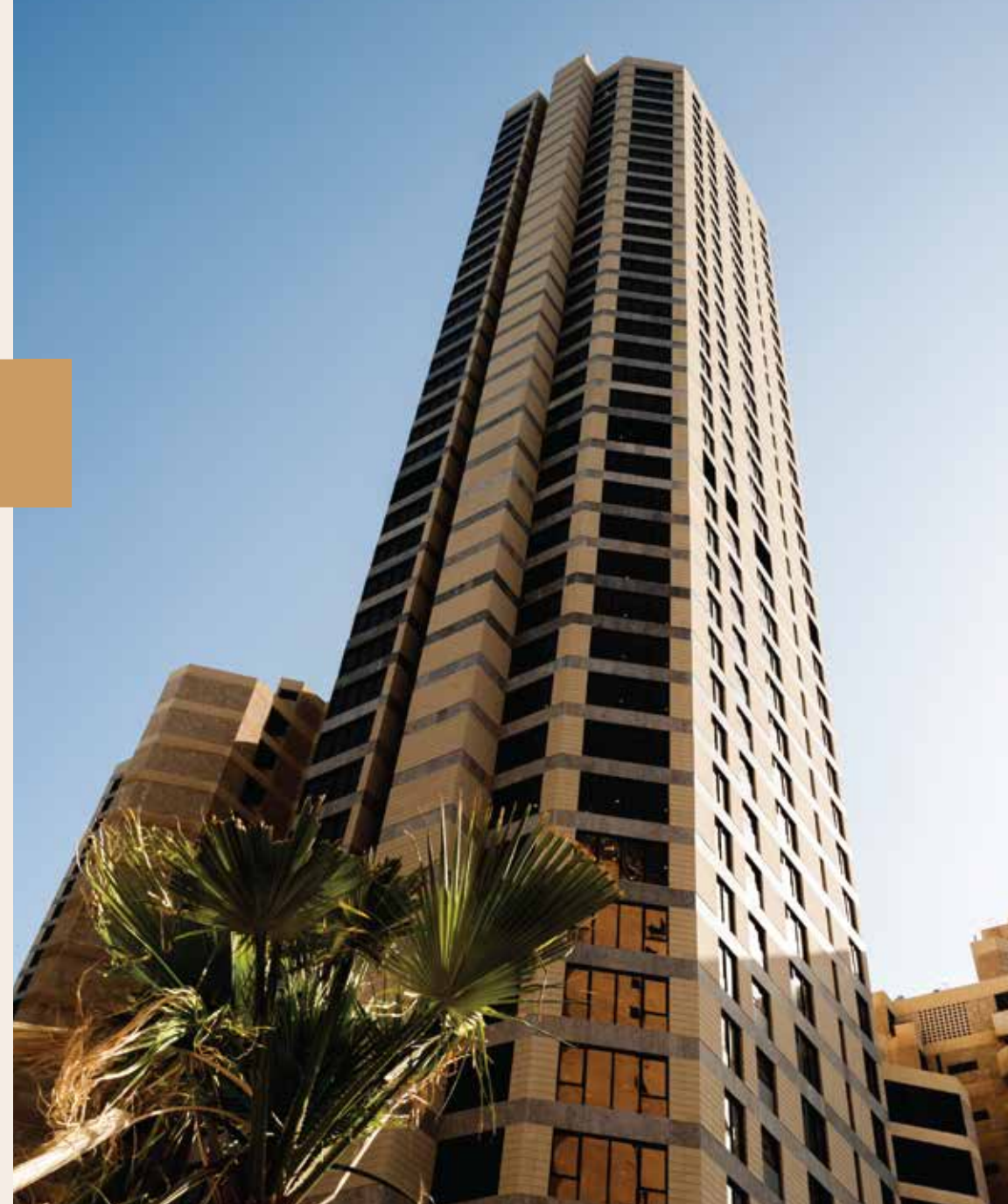
-  CIVIL CONSTRUCTION
-  INFRASTRUCTURE
-  ELECTRICAL ENGINEERING
-  INTERIOR FIT-OUTS
-  ENGINEERING PRODUCTS
-  EQUIPMENT RENTALS & SCAFFOLDING
-  BUILDING TRANSPORT SYSTEMS
-  WATER FEATURES / SWIMMING POOLS





## CIVIL CONSTRUCTION

As a Grade One (highest grade) certified company, KCPC undertakes all types of residential, commercial (retail/hotel) and industrial building projects in the government and private sectors. KCPC participates in mega projects through our association with globally-reputed design, engineering and construction firms.

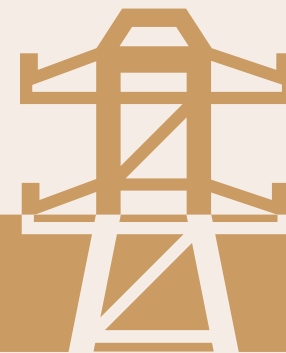






## INFRASTRUCTURE

KCPC is proud to undertake urban planning projects including construction and maintenance of road and highway projects, including related services such as storm water drainage sewer systems, water networks and telephone networks.

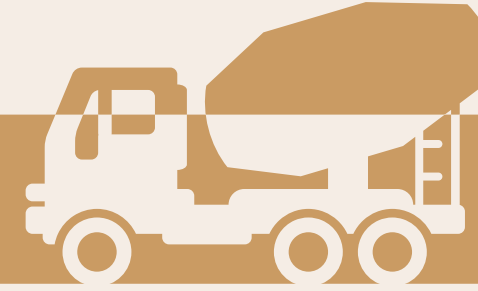


## ELECTRICAL ENGINEERING

Classified as highest grade, KCPC provides services ranging from supply and installation to project management and maintenance of substations, switchgear/bus ducts, power cabling works, power lighting control systems, street lighting, emergency power supply and much more electrical engineering.







READY MIX-CONCRETE &  
READY MIX ASPHALT

## INTERIOR FIT-OUTS

KCPC Interiors conceptualize, design, procurement hand-selected pieces, engineer, install and manage high-end, luxury interior fit-out projects. KCPC Interiors has a proven track record in Kuwait and the GCC in completing fit outs for palaces, hotels and other such prestigious projects.

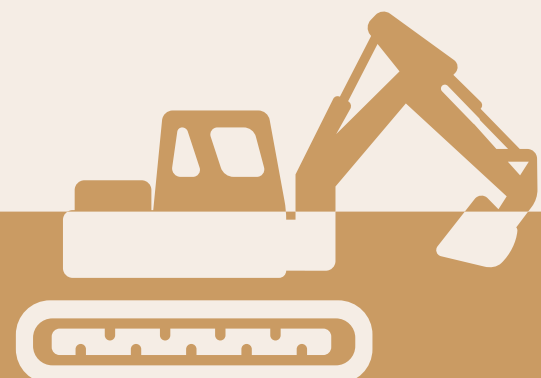
## ENGINEERING PRODUCTS

Ready-Mix Concrete (RMC) and Ready-Mix Asphalt (RMA) plants / factories support civil construction work and infrastructure works including maintenance.

Products include asphalt, polymer-modified asphalt, red mix asphalt, ready mix concrete and green concrete.







## EQUIPMENT RENTALS & SCAFFOLDING

We provide complete systems that cater to access scaffolding and formwork slab support. This formwork slab support can be used in a wide variety of applications from light to heavy duty scaffolding, shoring for buildings and other civil engineering work.

The department owns and maintains a very large fleet of construction vehicles and equipment's to support our projects. We further provide renting/leasing services.

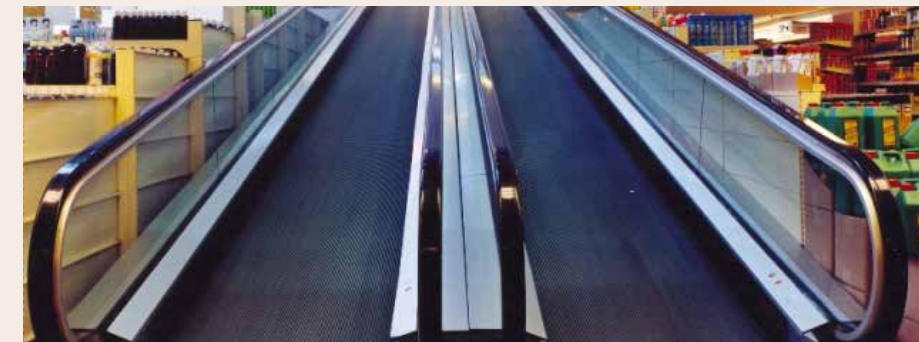


TRADING DIVISION

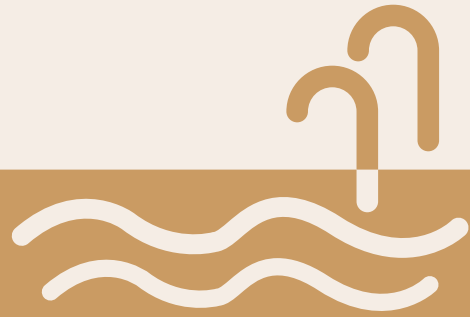
## BUILDING TRANSPORT SYSTEMS

Pioneers in the field of building transport systems for over 30 years, KCPC supplies and installs passenger elevators, freight elevators, escalators, moving walks, dumbwaiters, and elevators for the physically challenged.

The Division is supported by a team of experienced, qualified engineers and technicians, providing round the clock maintenance services.







TRADING DIVISION

## WATER FEATURES / SWIMMING POOLS

KCPC constructs, installs and maintains water facilities, water treatment, swimming pools and SPA facilities. KCPC has been providing excellent service for its clients for the past 25 years.



CIVIL ENGINEERING  
ROAD & INFRASTRUCTURE  
SPECIALTY PROJECTS  
ELECTRICAL ENGINEERING  
SCAFFOLDING & EQUIPMENT RENTALS  
BUILDING PRODUCTS  
WATER FACILITIES  
TRANSPORT SYSTEMS  
TO YOUR SATISFACTION  
ON-TIME WITHIN BUDGET



# QUALITY / HEALTH / SAFETY & ENVIRONMENT (QHSE)

Our policy is to attain, deliver and maintain the highest standards of quality in our works, services and supplies so as to always satisfy or exceed our customers' requirements in the most competitive and effective way.

At KCPC, continuous quality improvement is the responsibility of every employee. We are committed to a policy of continuous improvement, not just in quality, but for the entire organization. We realize that quality is a never-ending journey that involves the whole organization, and all personnel. We are committed to providing necessary resources and training to continuously improve our quality management system.

We have established strategic relationships with all our suppliers and subcontractors. These relationships emphasize continuous improvement in their organizations, and ensure that we continuously receive defect-free materials and services on time and to specifications.

## HEALTH & SAFETY

The management of KCPC is committed to conduct all its operations in a manner that is protective of the health and safety of our employees, customers and the community.

We comply with all applicable legislation, regulations and contractual requirements: integrating health and safety in business planning and decision making; enhancing health and safety awareness among employees and associate suppliers and sub-contractors through effective communication and training; and investigating all workplace accidents and illness in order to promptly correct any unsafe conditions or practices and to identify the root causes and prevent recurrence.







## FEATURED PROJECTS

KNPC NEW HEAD OFFICE

BAYAN PALACE

JUMEIRAH MESSILAH BEACH HOTEL & SPA

SAIFI CROWN

KUWAIT UNIVERSITY (NEW CAMPUS)

PRIME TOWER

MASSALEH TOWERS

EQUATE



# KUWAIT NATIONAL PETROLEUM CO. NEW HEAD OFFICE

KCPC provided construction, completion and furnishing of Kuwait National Petroleum Company's (KNPC) new head office in Ahmadi, Kuwait with a total buildup area of 42,000 m2 and a parking facility for 600 cars. Total excavation of this project consisted of 41,000 cubic meters and a 34,000 cubic meters of concrete. Designed by Cambridge Seven Associates, the facility holds a commanding presence; appearing as a floating image over a dramatic reflecting lagoon.

LOCATION KUWAIT

CLIENT KNPC

COMPLETION YEAR 2005







## BAYAN PALACE INTERIOR FIT OUT

As a Kuwaiti-based company, we take great pride in providing construction works to our national landmarks. KCPC provided construction and completion of interior fit out and landscaping including gypsum works, marble works, painting, glass and aluminum works, ceilings, partitions, and all high-end decorative light fixtures, finishings and furniture.



KUWAIT

LOCATION

AMIRI DIWAN

CLIENT

2009

COMPLETION  
YEAR



# JUMEIRAH MESSILAH BEACH HOTEL & SPA

KCPC provided construction, completion and maintenance of this luxurious 5-Star hotel consisting of 485 rooms, and related services, with a total buildup area of 97,800 m2.

LOCATION KUWAIT

CLIENT

AL AZIZYAH GENERAL  
TRADING & CONTRACTING CO.

COMPLETION  
YEAR 2011







## SAIFI CROWN IN BEIRUT

Construction, completion and maintenance of state of the art residential tower Complex which consists of 23 floors and underground parking levels. With a total buildup area of 13,000 m2, Saifi crown offers spacious 3-bedroom, 4 bedrooms apartments and penthouse with its private gardens and pools.

LEBANON

LOCATION

MASSALEH REAL ESTATE CO.

CLIENT

2014

COMPLETION  
YEAR





# UTILITIES TUNNEL AT NEW KUWAIT UNIVERSITY CAMPUS

KCPC was responsible for construction, completion and maintenance of a 7x7 meter underground utilities tunnel. The tunnel is 4KM long, linking the basements of several colleges with the Central Utility Plant and the public shelters.

LOCATION KUWAIT

CLIENT KUWAIT UNIVERSITY

COMPLETION YEAR 2015







## PRIME TOWER IN BUSINESS BAY, DUBAI

KCPC designed and built this prestigious commercial tower consisting of 3 basements, ground floor and 36 floors (30 floors of office space, two levels allocated for retail establishments and 6 parking levels). The tower boasts a grand main entrance with a 12 meter high atrium containing a specially- designed curtain glass wall.

UAE LOCATION

SIDRA LIMITED

CLIENT

2015 COMPLETION YEAR



## MASSALEH TOWERS

Construction, completion and maintenance of Al Massaleh Towers (two towers), Tower A is a 29 floors and Tower B is a 40 floors all complete with interior fit-outs and landscaping.

LOCATION KUWAIT

CLIENT

MASSALEH REAL ESTATE CO.

COMPLETION  
YEAR 2016







## EQUATE HEADQUARTERS

Construction, completion and maintenance of Equate Headquarters Complex which consists of the main office building, a multi-purpose building, a mosque, sunken garden and a car park building (190 cars), built on an area of 20,000 m2.

The office building has a circular atrium with ample public spaces, panoramic elevators and ceremonial staircases. Offices are located on the first and second floors.



KUWAIT

LOCATION

EQUATE

CLIENT

2017

COMPLETION  
YEAR



# CORPORATE SOCIAL RESPONSIBILITY

## COMMITMENT TO VALUES

KCPC takes pride in being highly committed and engaged with our communities, and has been working to develop the values created for the society.

## ETHICAL BUSINESS

KCPC's mission is captured in its motto, "ON TIME, WITHIN BUDGET, TO YOUR SATISFACTION," by conducting business with unparalleled integrity and uncompromising ethics, our mission is not just a statement, it is a reflection of how we live.

## COMMUNITY INVOLVEMENT

KCPC makes it a priority to give back to the community in the areas where we live and work. KCPC supports local, national, and international programs. KCPC values education and supports a variety of outreach programs, sponsorships and scholarships.

## SUSTAINABLE BUSINESS PRACTICES

From recycling concrete on our projects to recycling programs at our offices, we're constantly looking at new ways to save resources. Our Environmental Best Practices certification was a catalyst to the protection of the KCPC environment; worksite, office, way of life.

“In continuation of the CSR initiatives, KCPC sponsored the landscaping and gardening of the Al-Ta’heel Al-Fikri (Special Needs School for Girls) located in Hawally, Kuwait”.



“As part of KCPC’s corporate social responsibility (CSR) initiatives, the company organizes Blood Donation Campaign every year in coordination with Central Blood Bank, Kuwait at our Head Office in Shuwaikh, Kuwait”.





# AWARDS & RECOGNITION

In May of 2014, the American Concrete Institute ACI-Kuwait Chapter presented KCPC with 2 Awards of Excellence for year 2013 for their achievements in the Jumeirah Beach Hotel & Spa, Kuwait project:

BEST GENERAL CONTRACTOR AWARD

BEST CONCRETE SUPPLIER AWARD





## BRANCHES & SUBSIDIARIES

